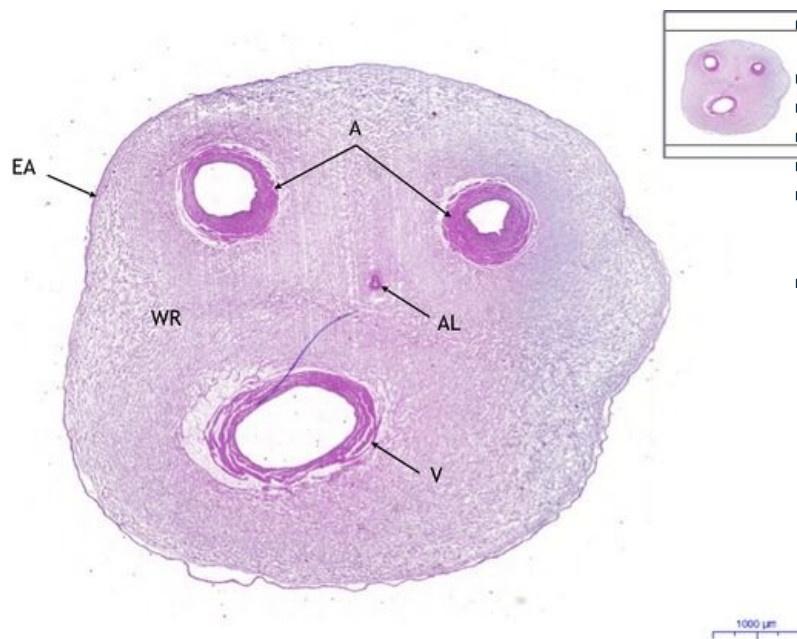


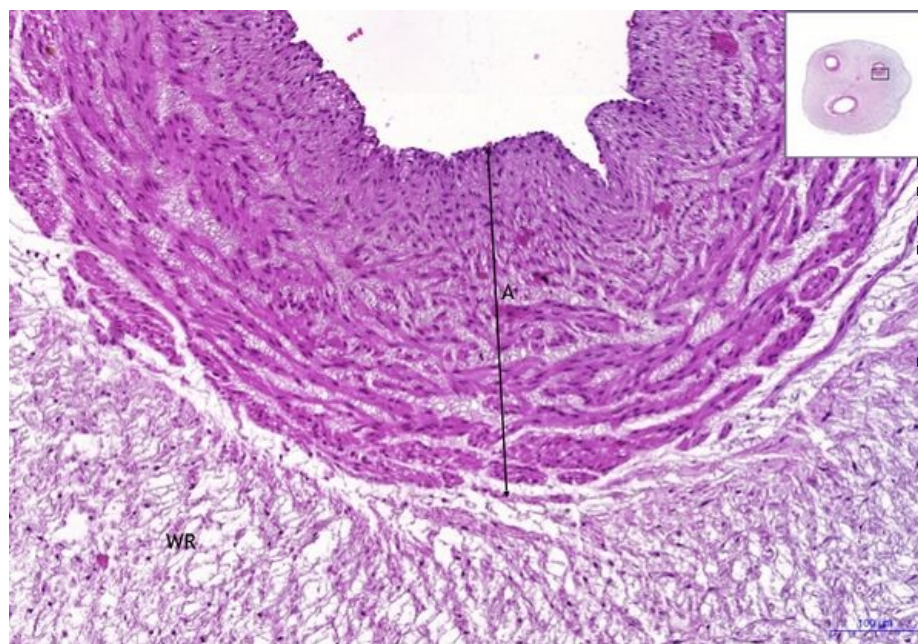
# Umbilical cord (HE)

## Navel / Umbilical cord - AZAN, 1x



### Umbilical cord:

- 1) **AL** - allantois
- 2) **A** - artery/arteries
- 3) **V** - vein
- 4) **EA** - amnion epithelium
- 5) **WR** - Wharton's jelly / Wharton's jelly (substantia gelatinae funiculi umbilicalis)
- 



## Navel / Umbilical cord - AZAN, 10x

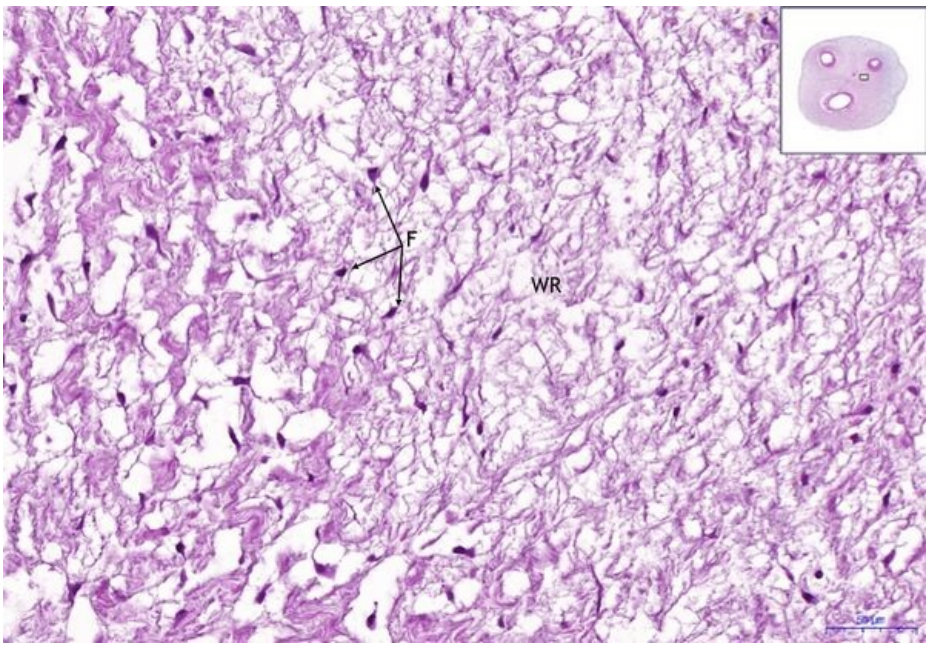
### Umbilical cord:

- 1) **A** - artery/arteries
- 2) **WR** - Wharton's jelly / Wharton's jelly (substantia gelatinae funiculi umbilicalis)
- 

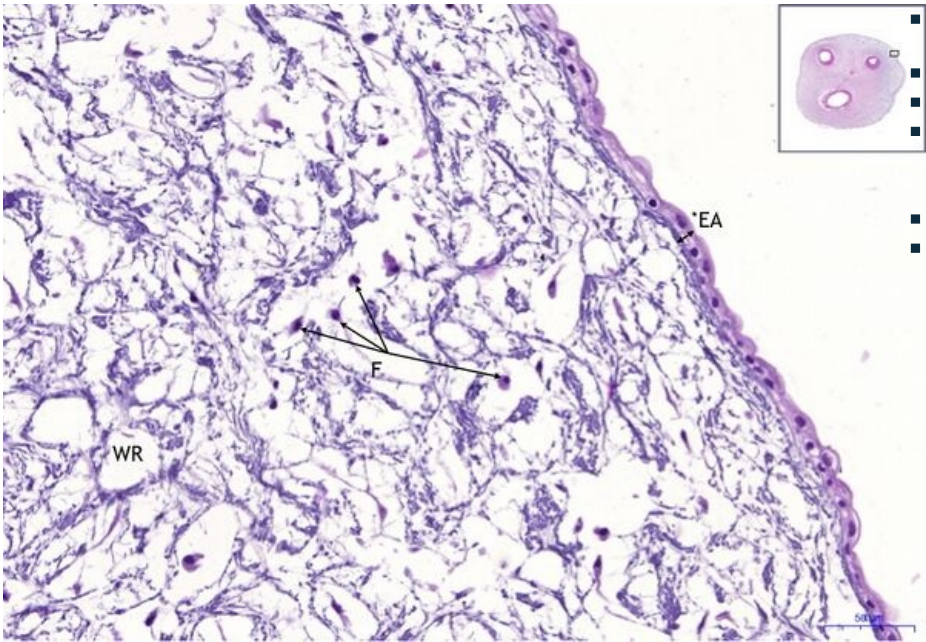
## Navel / Umbilical cord - AZAN, 20x

### Umbilical cord:

- 
- 1) **WR** - Wharton's jelly / Wharton's jelly (substantia gelatinae funiculi umbilicalis)
- 2) **F** - fibroblast
-



Navel / Umbilical cord - AZAN, 20x



- **Umbilical cord:**
- **1) EA** - amnion epithelium
- **2) WR** - Wharton's jelly / Wharton's jelly (substantia gelatinae funiculi umbilicalis)
- **3) F** - fibroblast
- 

Navigation

Connective and supporting tissue

← Preparation No. 30

List of preparations

Preparation No. 21 →

Navigation: Fetal membranes

← Preparation X6

List of preparations

Preparation X2 →