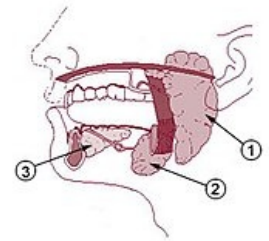


Submandibular gland

Submandibular gland is a seromucinous gland with a predominance of serous component. It is stored in the Submandibular triangle. In some cases, it extends beyond the front and back edges of the trigonum submandibulare. Sometimes it also extends into the trigonum sublinguale and can connect with the Sublingual gland.

Ductus submandibularis crosses the lingual nerve when turning to the cranial side of the mylohyoid muscle and continues along the inner side of the sublingual gland. It opens in the *caruncula sublingualis* together with the ductus sublingualis major.



Large salivary glands.
Description: 1 – glandula parotis, 2 – **glandula submandibularis**, 3 – glandula sublingualis.

Histology

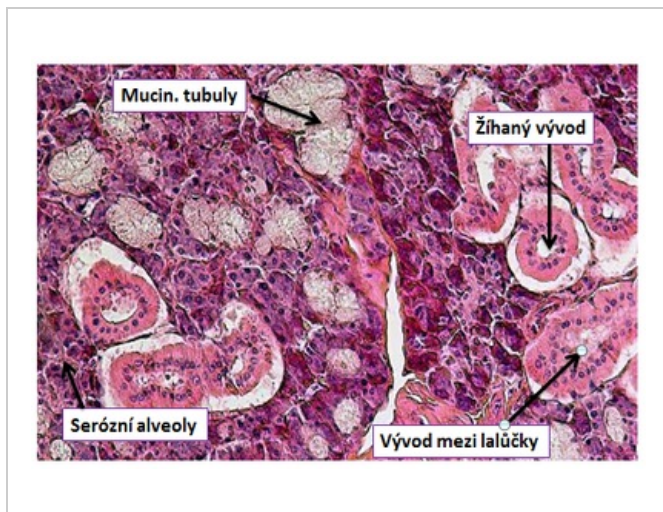
Submandibular gland is a mixed seromucinous gland with a **predominance of serous component**. It contains serous alveoli with inserted and annealed ducts, in smaller quantities also mucinous tubules, on which groups of serous cells that resemble crescent moons (*Gianuzzi's lunula*).

Blood vessels and nerves

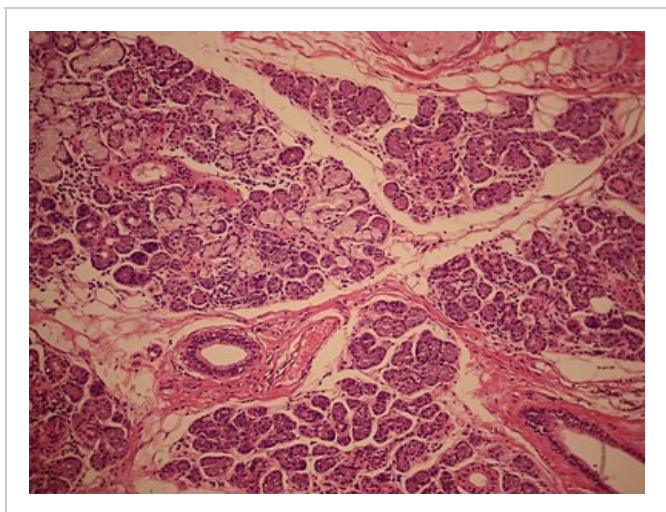
Branches for arterial supply go from **facial artery** and **lingual artery**. The veins converge into **facial vein** and **lingual vein**. The lymphatic drainage of this area leads to **the submandibular lymph nodes** and from them to the deep neck nodes.

Sympathetic fibers come along with arteries, *parasympathetic ones* come from the facial nerve (n. intermedius) as **chorda tympani** and from the lingual nerve to the submandibular ganglion and from there **rr. glandulares**. Sensitive branches originate from the lingual nerve.

Histology Gallery



Histological description



Microscopic image of glandula submandibularis: large ducts are surrounded by tissue, mucinous cells are lighter, while serous cells are highly basophilic.

Links

Related Articles

- Submandibular Triangle
- Facial nerve
- Salivary gland innervation
- Salivary glands
- Parotid gland
- Sublingual gland

External links

- Article about glands (http://www.med.muni.cz/histology/MedAtlas_2/MA_txt3-1-5-2.htm) on the website of Masaryk University

References

- ČIHÁK, Radomír – GRIM, Miloš. *Anatomie*. 2. upr. a dopl edition. Grada Publishing, 2002. 470 pp. vol. 2. ISBN 80-247-0143-X.