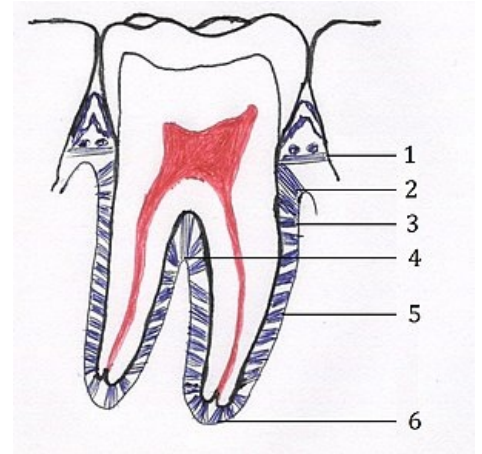


# Sharpey's fibers

**Sharpey fibers** are bundles of collagen fibers passing through the periodontal fissure.

- **Gingival** - they attach to the loose gingiva. It forms the so-called *circular ligament*, which we disrupt before tooth extraction.
- **Transseptal** - connect adjacent teeth in a row. When the alveolar process decreases, these fibers increase.
- **Crest** - they come from the crest of the alveolus to the neck area of the cementum. It works against **pull** forces.
- **Horizontal** - support previous threads.
- **Slanted** - ***capture the main part of the occlusal load on the tooth. It works against pressure forces.***
- **Apical** - lead from the apex of the tooth to the bottom of the tooth bed.

This arrangement is called a *functional arrangement*.



**Periodontal ligaments;** 1) gingival, 2) ridged, 3) horizontal, 4) interradicular, 5) oblique, 6) apical

## Links

### Related Articles

- Dentinum
- Enamelum
- Teeth

### References

- CLIQUE, Eduard. *Histology for dentists*. 1. edition. Avicenum, 1988. 448 pp.