

Migration and Transmigration of Teeth

Migration of Teeth

- Is the tooth movement occurring AFTER tooth eruption
- Causes:
 1. Periodontal disease
 2. Occlusal trauma
- Factors that influence their movement:
 1. Masticatory forces
 2. Tongue forces
 3. cheeks
 4. Lips
- Manifestation:
 1. Rotation
 2. Diastema
 3. Extrusion, intrusion
 4. Proclination

Transmigration

- Tooth movement BEFORE tooth eruption
- The tooth moves inside the mandible (or maxilla), like a "Tunnel Boring Machine"
- As a result the tooth might erupt in a wrong place (transposition or ectopy) or even remain under the bone (impacted)
- More commonly seen in mandibular permanent canines

Links

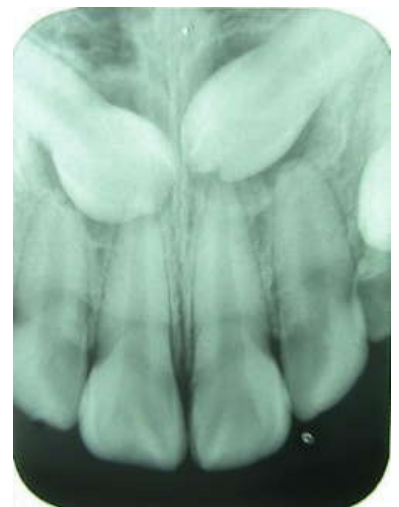
Related Articles

- Classification of Orthodontic Anomalies

Bibliography

KLEPACEK, Ivo. *Anatomy of teeth* [lecture for subject Clinical orofacial anatomy, specialization Clinical orofacial anatomy, LF1 Charles university]. Prague. April.

References



impacted upper canines