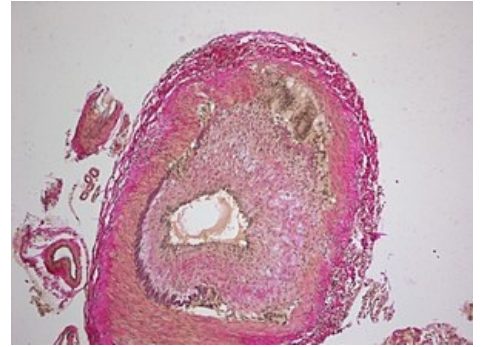


# Giant cell arteritis (briefly)

**Giant-cell (temporal) vasculitis** is a vasculitis of an unknown origin affecting a. carotis externa and interna in individuals over 50 years, more women.

## Clinical picture

- gradual development of general symptoms - weakness, fever, weight loss
- headaches, vision disorders, maxillary claudication
- attenuation of heart rate + palpation sensitivity/redness of palpable nodules at temporal arteries
- peripheral polyneuropathy may also occur within the disease, mononeuritis multiplex



Microscopic view of a Giant cell arteritis.

## Treatment

- glucocorticoids in invasive doses  $\frac{1}{2}$ -1 mg/kg with gradual decrease
- occurs in connection with **rheumatic polymyalgia** (unclear etiology, in elderly patients, pain and stiffness of the muscles of the brachial + pelvic girdle, general symptoms may occur)