

Gerota's Fascia

English: *renal fascia*

Latin: *fascia renalis*



Gerota's fascia surrounds kidney with its fat case. It has two (connected) parts:

- *fascia prerenalis* – localized before the kidney,
- *fascia retrorenalis* – localized behind the kidney.^[1]

All the described structures lie in the retroperitoneal space.

Clinical significance of the Gerota's fascia is:

- fixation of the kidney in retroperitoneal space,
- significance in TNM classification of renal cell carcinoma.

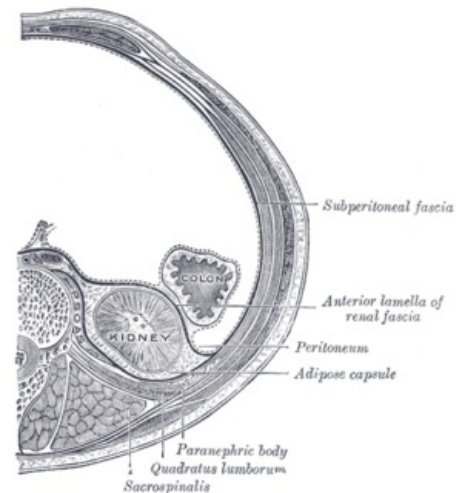
Links

Related Articles

- Kidney

References

1. ČIHÁK, Radomír, et al. *Anatomie 2 : Druhé, opravené a doplněné vydání*. 2. edition. Prague : Grada, 2002. pp. 265. ISBN 80-247-0143-X.



Transversal section of abdomen, please note *anterior lamella of renal fascia* (= *fascia prerenalis*), *posterior lamella of renal fascia* (= *fascia retrorenalis*) is not described, but lies before psoas.