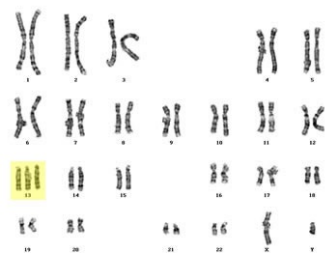


File:PS2.jpg



No higher resolution available.

PS2.jpg (350 × 264 pixels, file size: 11 KB, MIME type: image/jpeg)

Description

Patau Syndrome Kayotype

Author

http://www.google.com/imgres?

Source

http://www.google.com/imgres?
imgurl=https://www.labcorp.com/images/47XY_13_BKE1.jpg&imgrefurl=https://www.labcorp.com/genetics/definitions/Trisomy_13_47_%2520XY_13.html&usg=__FH9MJoejdgfoSanDeLU9WjO
pt&start=65&zoom=1&tbnid=1q5vQF8dgrtISM:&tbnh=169&tbnw=218&prev=/images%3Fq%3Dtrisomy%2B13%26um%3D1%26hl%3Dpt-
pt%26sa%3DN%26biw%3D1280%26bih%3D673%26tbs%3Disch:10,1490&um=1&itbs=1&iact=rc&dur=330&ei=gsjzTOWjMcrEswa7tjT2Cg&oei=ecjzTNj1HpKAswb51bXzCQ&esq=4&page=4

Date

2010-11-29

Licensing

Public domain

File history

Click on a date/time to view the file as it appeared at that time.

	Date/Time	Thumbnail	Dimensions	User	Comment
current	17:37, 29 November 2010		350 x 264 (11 KB)	77279913 (talk contribs)	{ {File description = Patau Syndrome Kayotype source = http://www.google.com/imgres?imgurl=https://www.labcorp.com/images/47XY_13_BKE1.jpg&imgrefurl=https://www.labcorp.com/genetics/definitions/Trisomy_13_4

You cannot overwrite this file.

File usage

There are no pages that use this file.

Metadata

This file contains additional information, probably added from the digital camera or scanner used to create or digitize it.

If the file has been modified from its original state, some details may not fully reflect the modified file.