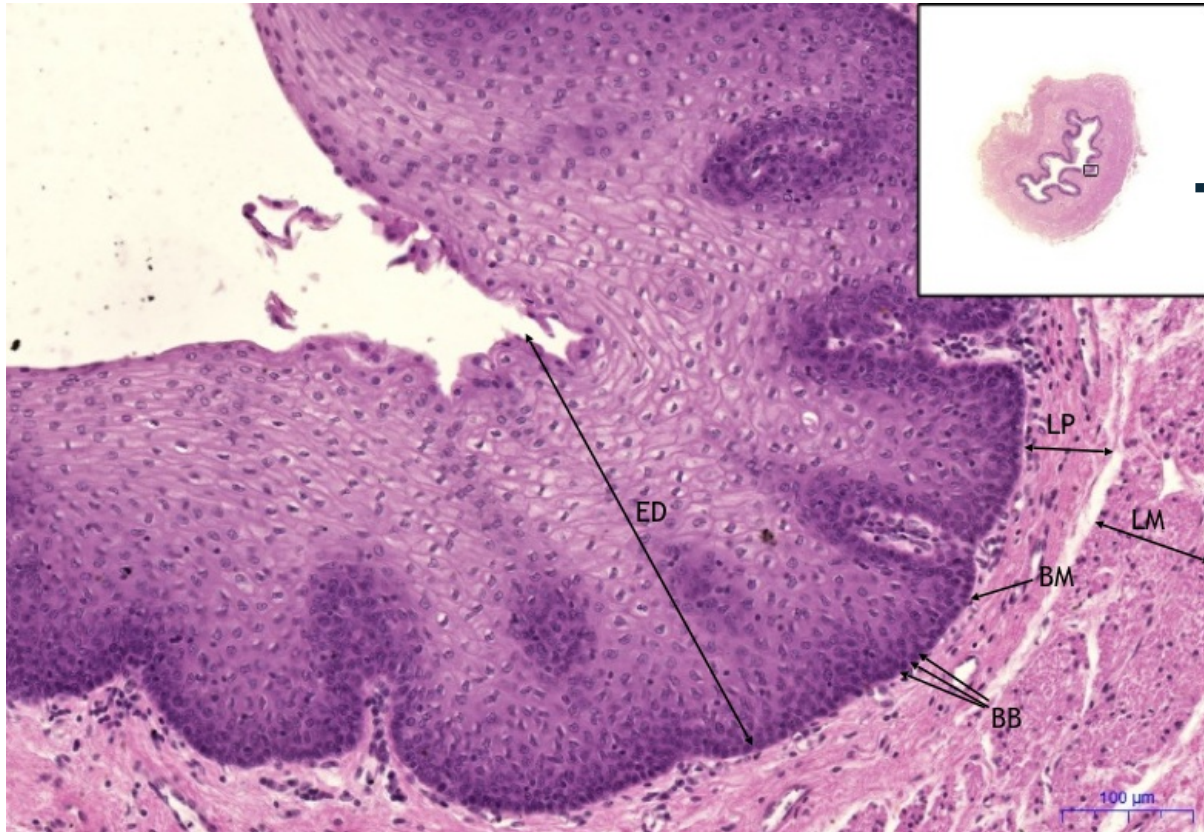


Esophagus - HE

Module B

[Expand]

Esophagus, HE 11,2x



Stratified squamous non-keratinized epithelium

▪ **ED** – dlaždicový

epitel/squamous epithelium

- **BM** – basement membrane
- **BB** – basal layer of cells
- **LP** – lamina propria
- **LM** – lamina muscularis

▪ **Other examples:**

Oral cavity, larynx, vagina (34)

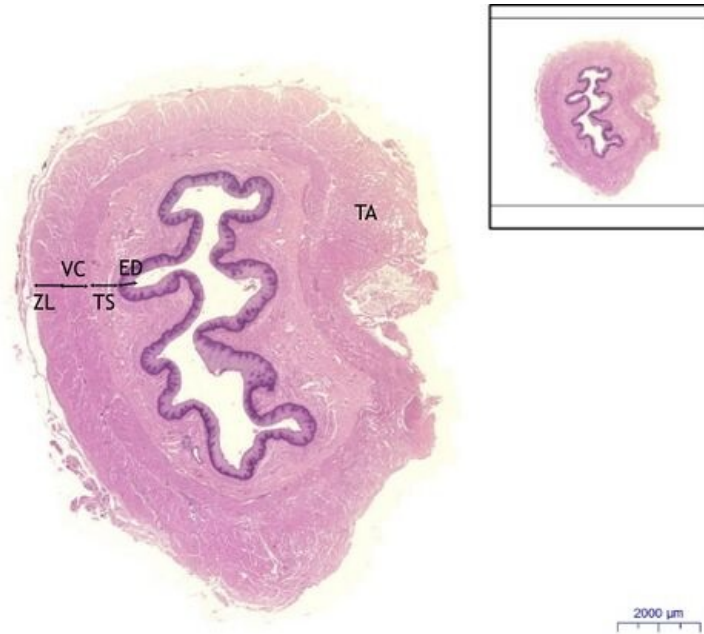
Navigation: Epithelial tissue

Modul A

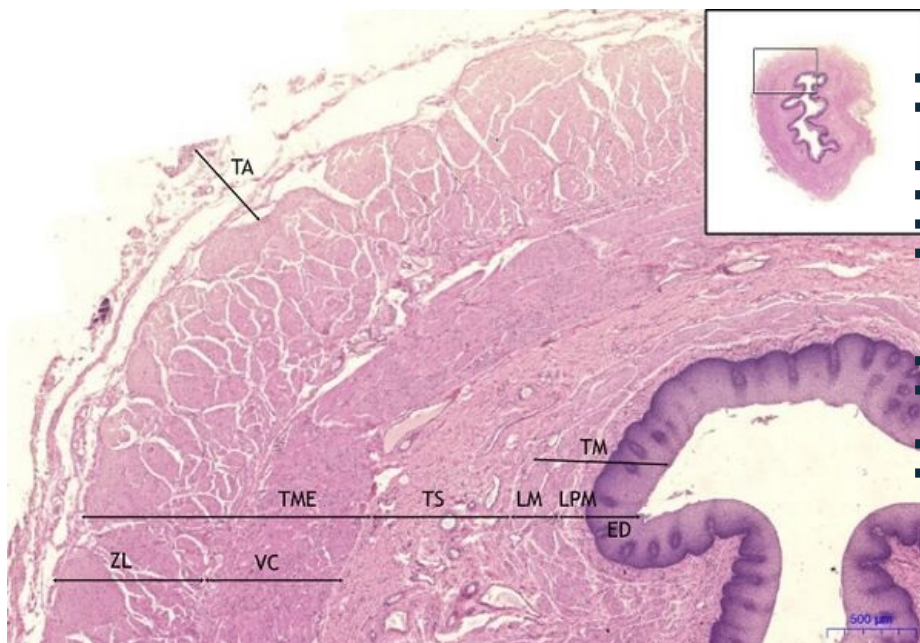
[Expand]

Esophagus, HE 0,5x

Esophagus.



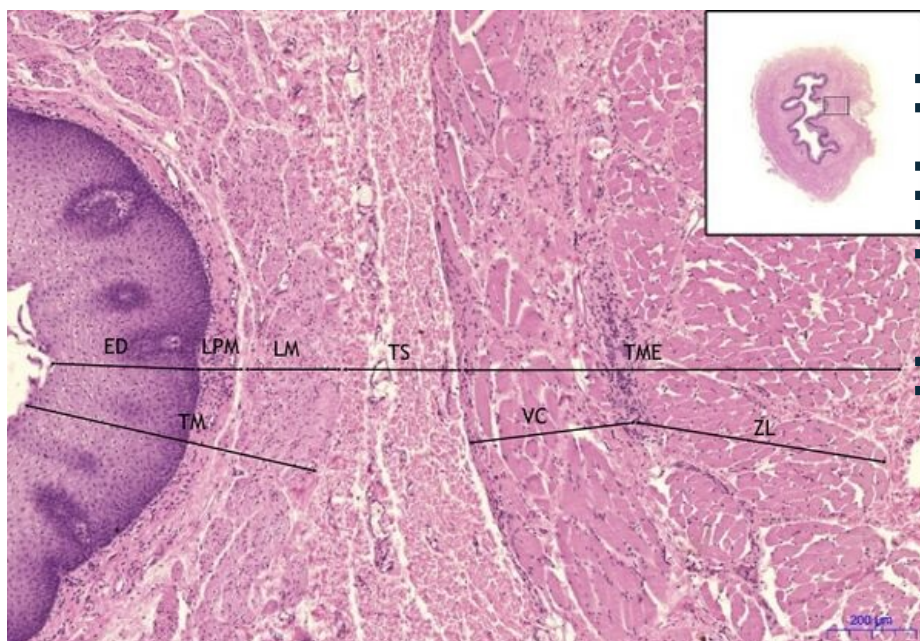
Esophagus, HE 2x



Esophagus:

- 1) **TM** - tunica mucosa
- 2) **ED** - stratified squamous epithelium
- 3) **LP** - lamina propria
- 4) **LPM** - lamina propria mucosae
- 5) **LM** - lamina muscularis mucosae
- 6) **TS** - tunica submucosa
- 7) **TME** - tunica muscularis externa
- a) **VC** - inner circular layer
- b) **ZL** - outer longitudinal layer
- 4) **TA** - tunica adventitia
- note: Short abdominal part of esophagus is covered with serosa (tunica serosa).

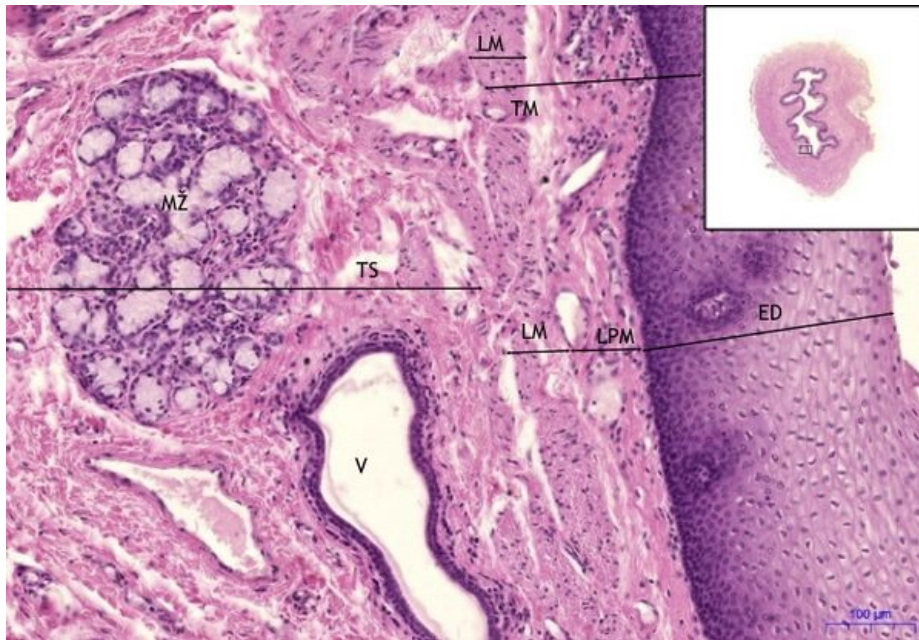
Esophagus, HE 5x



Esophagus:

- 1) **TM** - tunica mucosa
- 2) **ED** - stratified squamous epithelium
- 3) **LP** - lamina propria
- 4) **LPM** - lamina propria mucosae
- 5) **LM** - lamina muscularis mucosae
- 6) **TS** - tunica submucosa
- 7) **TME** - tunica muscularis externa
- a) **VC** - inner circular layer
- b) **ZL** - outer longitudinal layer

Esophagus, HE 10x



Esophagus:

- **1) TM** – tunica mucosa
- **2) ED** – stratified squamous epithelium
- **3) LP** – lamina propria
- **4) LPM** – lamina propria mucosae
- **5) LM** – lamina muscularis mucosae
- **6) TS** – tunica submucosa
- **a) MŽ** – esophageal glands (mucinous)
- **b) V** – excretory duct

Navigation: Urinary system