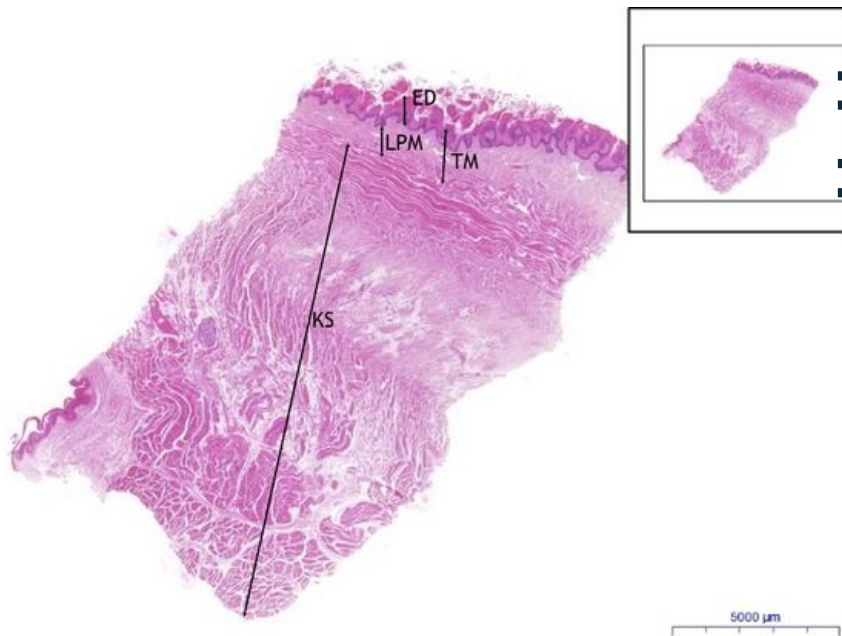


Dorsum of tongue - HE

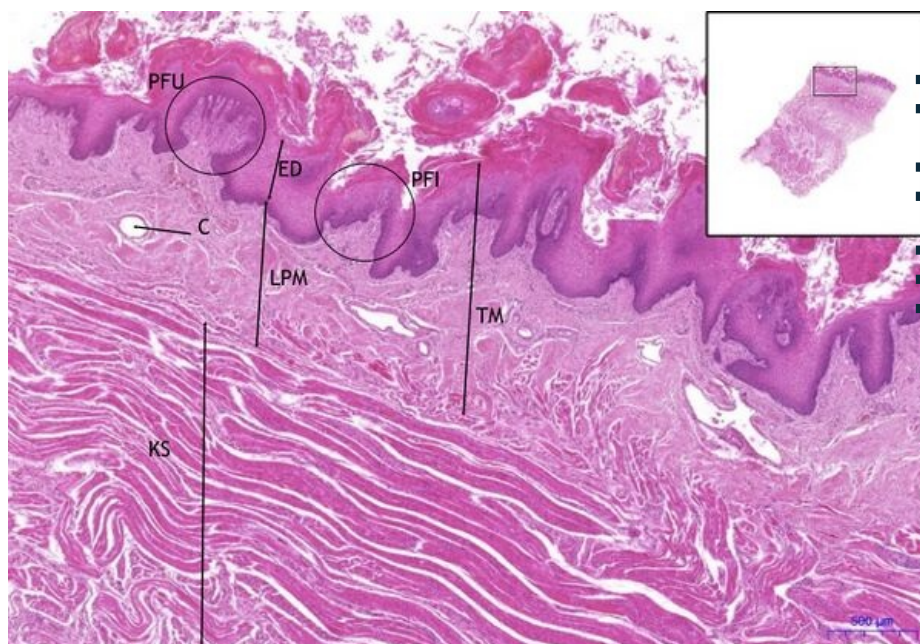
Dorsum of tongue, HE 0,4x



Dorsum of tongue:

- 1) **TM** - tunica mucosa
- 2) **ED** - stratified squamous epithelium - non keratinized
- 3) **LPM** - lamina propria mucosae
- 4) **KS** - skeletal muscle

Dorsum of tongue, HE 2x



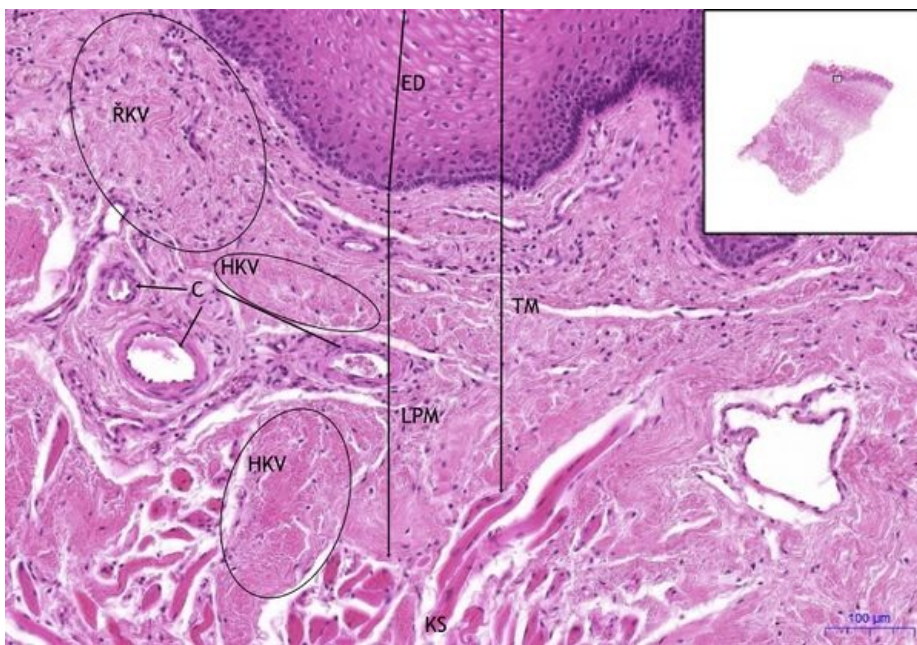
Dorsum of tongue:

- 1) **TM** - tunica mucosa
- 2) **ED** - stratified squamous epithelium - non keratinized
- a) **PFI** - filiform papillae
- b) **PFU** - fungiform papillae
- 3) **LPM** - lamina propria mucosae
- a) **C** - blood vessel
- 4) **KS** - skeletal muscle

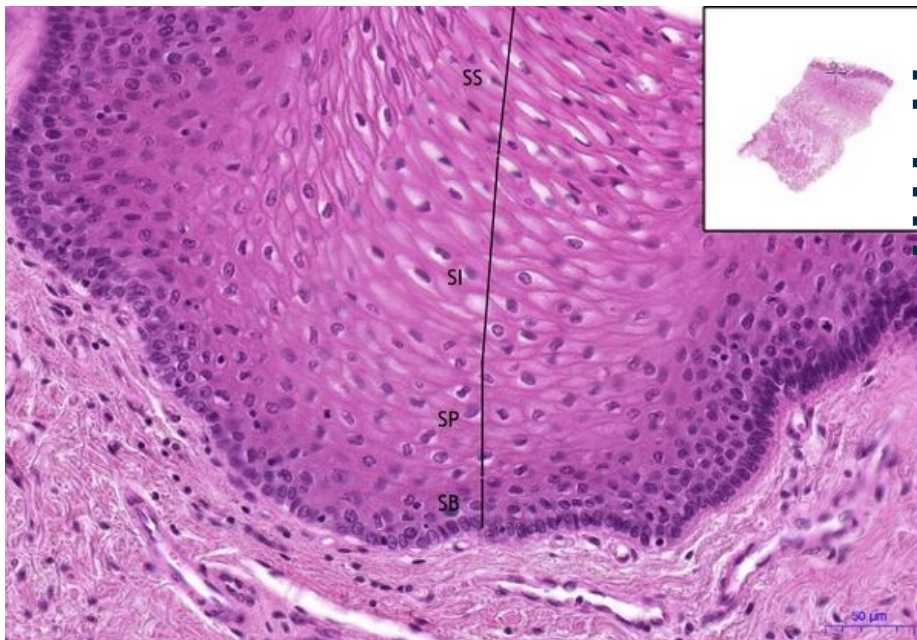
Dorsum of tongue, HE 10x

Dorsum of tongue:

- 1) **TM** - tunica mucosa
- 2) **ED** - stratified squamous epithelium - non keratinized
- 3) **LPM** - lamina propria mucosae
 - a) **HKV** - loose connective tissue
 - b) **HKV** - dense connective tissue (aponeurosis)
 - c) **C** - blood vessel
- 4) **KS** - skeletal muscle



Dorsum of tongue, HE 20x



Dorsum of tongue:

- 1) **TM** - tunica mucosa
- 2) **ED** - stratified squamous epithelium - non keratinized
- a) **SB** - stratum basale
- b) **SP** - stratum parabasale
- c) **SI** - stratum intermedium
- d) **SS** - stratum superficiale

Navigation

Navigation: Digestive tract

← Slide Z21 | List of the slides | Slide Z2 →