

Division of Pathological Stages of the Pulp

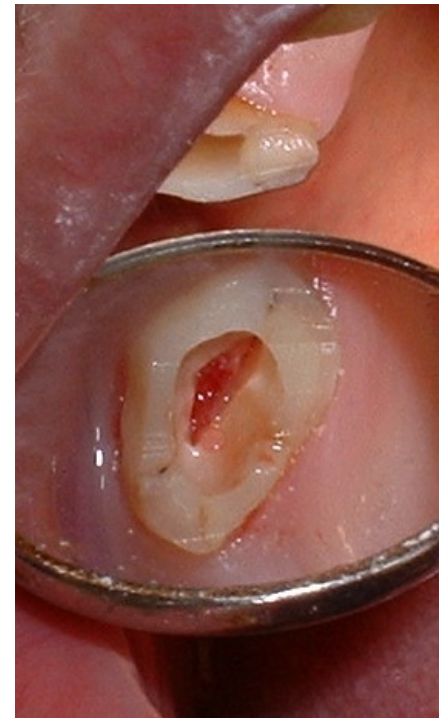
Baume Classification

Normal Pulp (sound pulp)

- Positive cold test
- Negative percussion test
- Radiology
 - May show varying degrees of pulpal calcification, but no evidence of resorption, caries or mechanical pulp exposure
- No endodontic treatment necessary

Reversible Pulpitis

- Inflammatory changes of the pulp
- Heals after filling
- Stimulation (hot and cold test) is uncomfortable to the patient but reverses quickly after irritation
- Upon test -> sharp, quickly reversible pain
- No night pain !
- CAUSES
 - caries
 - exposed dentin (mostly in cervical area)
 - recent dental treatment
 - defective restoration
- Histopathology
 - Hyperemia pulpa
 - Pulpitis acuta serosa
- Analgetics work
- Caries profunda simplex or pulpam penetrans
- Treatment
 - After preparation of caries, indirect pulp capping



Opened pulp

Irreversible Pulpitis

- Classification
 - Symptomatic
 - Asymptomatic --> will lead either to symptomatic or to necrotic pulp
- Typically irreversible pulpitis occurs when symptomatic irreversible pulpitis remains untreated, thus the pulp will eventually become necrotic
- Analgesics DOESN'T work
- Percussion test might be positive in the end because of edema of pulp and vessels in the apex
- Symptoms
 - Pain without stimulus
 - Sudden pain especially during supine position

Night pain
Pain fluctuates (vs periodontal pain --> stable pain!)

Pulp Necrosis and Gangrene

- Pulpal blood supply nonexistent
- Pulpal nerves are nonfunctional
- Results from symptomatic or asymptomatic irreversible pulpitis
- After the pulp becomes completely necrotic, the tooth will typically become asymptomatic until the time that the infection will spread to the periradicular tissues (per continuitatem spread)
- Negative response to cold stimulation
- Pulpal necrosis

Complete

Partial --> not all root canals of the tooth are involved

Links

Related Articles

- Indications and Contraindications of Endodontic Therapy

Bibliography

- OTT, Daniel. *Pulpitis* [lecture for subject Restorative Dentistry, specialization Endodontics, LF1 Charles university]. Prague. April 2012.