

# Diaphysis

**Diaphysis** is the main or midsection of a long bone between metaphyses.

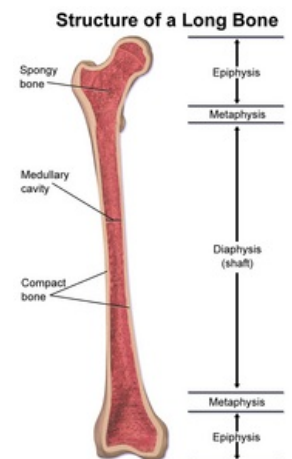
## Links

### Related Articles

- Epiphysis (part of bone)
- Metaphysic
- Bone

### Source

- SOSNA, A. – VAVŘÍK, P. – KRBEC, M., et al. *Základy ortopedie*. 1. edition. Praha : Triton, 2001. ISBN 80-7254-202-8.



The structure of a long bone