

Consomic Strain

This article was checked by pedagogue



This article was checked by pedagogue, but more than year ago.

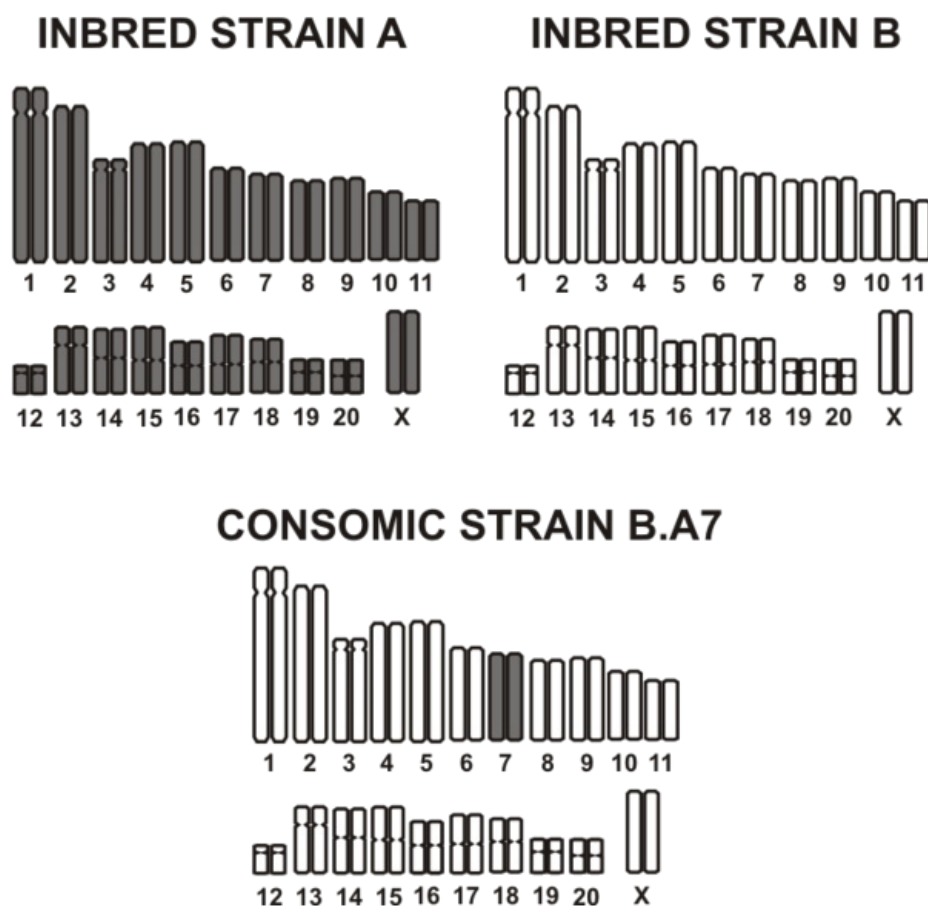
Signature: OSeda (talk)



English: *consomic strain*
Czech: *konsomický kmen*



Consomic strains are special type of congenic strains. The differential segment between the consomic strain and its parental (progenitor) strain is represented by a whole chromosome. Consomic strains are often used in experimental genetics. A panel of consomic strains, where each strain carries a distinct chromosome from strain A on the genomic background of strain B (see ideogram of one such strain, B.A7 below), can speed up the localization of genes influencing particular trait on the specific chromosome.



Links

Related articles

- Congenic Strain

Bibliography

- ŠEDA, Ondřej – LIŠKA, František – ŠEDOŤÁ, Lucie. *Current genetics* [online]. ©2005-2006. [cit. 2011-09-08]. <<http://biol.lf1.cuni.cz/ucebnice/en/index.htm>>.

