

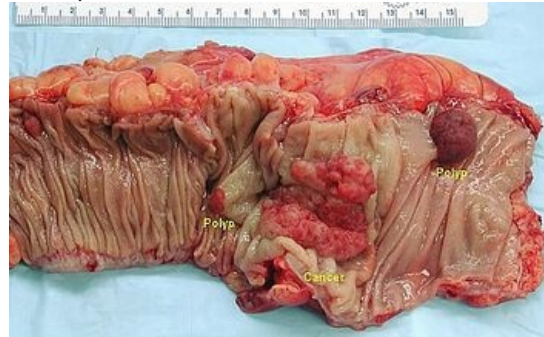
Colorectal cancer/pathology

This article has been translated from WikiSkripta; ready for the **editor's review**.

Precancers

dysplastic adenomas (tumor polyps) and other intraepithelial neoplasias, for example DALM (Dysplasia Associated Lesions or Masses) in ulcerative colitis are considered precancers colitis]]. The risk of their malignant

transformation is closely related to the degree of dysplasia.



Macroscopy

Based on the nature of the growth, possible complications of the disease can be deduced. From the point of view of macroscopy, we divide KR-CA into three groups:

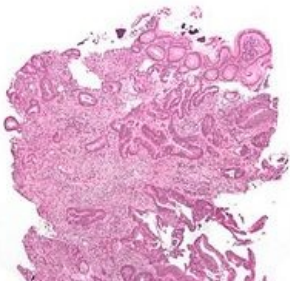
- **exophytic (polyposis)** - the main risk is obstruction of the lumen of the intestine (ileus) and, rarely, intussusception of the intestine;
- **excavated (exulcerated)** - the risk is mainly bleeding and perforation of the intestinal wall with subsequent peritonitis;
- **flat (infiltrating)** - they can remain clinically mute for a long time.

As **annular cancer** we mainly call left-sided cancers growing around the entire circumference of the intestine and thus leading relatively early to stenoses with all the consequences. On the contrary, right-sided carcinomas grow primarily exophytically.

Localization of tumors according to frequency ^[1]

- left colon – 64%;
 - rectum – 30%;
 - sigmoid – 26%;
 - descending colon – 8%;
- colon transverse – 13%;
- colon ascendens – 9%;
- caecum – 14%.

Microscopy



Microscopically, these are mainly **adenocarcinoma** (in 95% ^[2]), we then distinguish their differentiation:

- G1 – well differentiated (tubular or papillary);
- G2 – moderately differentiated;
- G3 – poorly differentiated (solidly arranged) – with worse prognosis.

We also have several more rare types of KR-CA – mucinous (mucous-forming) adenocarcinoma (which, as the name suggests, is characterized by the formation of extracellular mucus), adenosquamous carcinoma and ring cell carcinoma.

Staging

We normally use 2 classification systems to classify KR-CA

- **TNM classification,**
- **Dukes System.**^[3]

Stage	Description
Stage A	tumor bounded by the intestinal wall
Stage B	the tumor invades or penetrates the serosa
Stage C1	tumor + positive pericolic lymph nodes
Stage C2	tumor + positive perivascular nodes
Stage D	distant metastases

Comparison of TNM classification and Dukes system ^[4]

Stage 0	Thousand	N0	M0	Dukes A
Stage 1	T1	N0	M0	Dukes A
	T2	N0	M0	DukesA
Stage 2	T3	N0	M0	Dukes B
	T4	N0	M0	Dukes B
Stage 3	T1-4	N1-3	M0	Dukes C
Stage 4	T1-4	N1-3	M1	Dukes D

 For more information see *Colorectal cancer/staging*.

Metastasis

KR-CA metastasizes, like most cancers, primarily *lymphogenically* - to local lymph nodes. Later then to distant lymph nodes and hematogenously, most often to the liver and lungs. Advanced disease can spread through the peritoneum (so-called **carcinomatosis of the peritoneum**). Rectal carcinomas have a tendency to grow into the surrounding organs (vagina, uterus, ureter, bladder, but also the os sacrum). In women, the occurrence of metastases in the ovaries is also typical. The metastatic process and complications related to it can in some cases be detected even earlier than the primary tumor itself.

Links

Related Articles

- Colorectal cancer

External links

- Atlas of pathology for medical students - colon (https://atlases.muni.cz/atlases/stud/atl_cz/main+pgit+colon.html#coloncarc)
- Cancer research UK – Dukes' stages of bowel cancer (<http://www.cancerresearchuk.org/about-cancer/bowel-cancer/treatment/dukes-stages-of-bowel-cancer>)

References

1. {{#switch: book |book = *Incomplete publication citation*. CZECH, Richard, et al. *Intern*. Prague : Triton, 2010. 855 s. 978-80-7262-438-6. |collection = *Incomplete citation of contribution in proceedings*. CZECH, Richard, et al. *Intern*. Prague : Triton, 2010. 855 s. {{ #if: 978-80-7387-423-0 |978-80-7262-438-6}} |article = *Incomplete article citation*. CZECH, Richard, et al. 2010, year 2010, |web = *Incomplete site citation*. CZECH, Richard, et al. Triton, ©2010. |cd = *Incomplete carrier citation*. CZECH, Richard, et al. Triton, ©2010. |db = *Incomplete database citation*. Triton, ©2010. |corporate_literature = CZECH, Richard, et al. *Intern*. Prague : Triton, 2010. 855 s. 978-80-7262-438-6} }
2. {{#switch: web |book = *Incomplete publication citation*. WORLD CANCER RESEARCH FUND INTERNATIONAL,World Cancer Research Fund International, 2015. Also available from <<https://www.wcrf.org/int/cancer-facts-figures/data-specific-cancers/colorectal-cancer-statistics>>. |collection = *Incomplete citation of contribution in proceedings*. WORLD CANCER RESEARCH FUND INTERNATIONAL,. World Cancer Research Fund International, 2015. Also available from <<https://www.wcrf.org/int/cancer-facts-figures/data-specific-cancers/colorectal-cancer-statistics>>. {{ #if: |978-80-7262-438-6}} } |article = *Incomplete article citation*. WORLD CANCER RESEARCH FUND INTERNATIONAL,. Colorectal cancer statistics. 2015, year 2015, also available from <<https://www.wcrf.org/int/cancer-facts-figures/data-specific-cancers/colorectal-cancer-statistics>>. |web = WORLD CANCER RESEARCH FUND INTERNATIONAL,. *Colorectal cancer statistics* [online]. World Cancer

Research Fund International, ©2015. Last revision 16/01/2015, [cit. 2015-11-13].
 <https://www.wcrf.org/int/cancer-facts-figures/data-specific-cancers/colorectal-cancer-statistics>. |cd =
 WORLD CANCER RESEARCH FUND INTERNATIONAL,. *Colorectal cancer statistics* [CD/DVD]. World Cancer
 Research Fund International, ©2015. Last revision 16/01/2015, [cit. 2015-11-13]. |db = *Incomplete database
 citation*. *Colorectal cancer statistics* [database]. World Cancer Research Fund International, ©2015. Last
 revision 16/01/2015, [cit. 2015-11-13]. <https://www.wcrf.org/int/cancer-facts-figures/data-specific-
 cancers/colorectal-cancer-statistics>. |corporate_literature = *Incomplete citation of company
 literature*. WORLD CANCER RESEARCH FUND INTERNATIONAL,. World Cancer Research Fund International,
 2015. Also available from <https://www.wcrf.org/int/cancer-facts-figures/data-specific-cancers/colorectal-
 cancer-statistics>. legislative_document = *Incomplete citation of legislative document*. 2015. Also available
 from URL <https://www.wcrf.org/int/cancer-facts-figures/data-specific-cancers/colorectal-cancer-statistics>.

3.

” {{{1}}} “

4. {{#switch: web |book = *Incomplete publication citation*. Czech Gastroenterological Society ČLS JEP. Also
 available from <http://www.cls.cz/seznam-doporucenych-postupu>. |collection = *Incomplete citation of
 contribution in proceedings*. Czech Gastroenterological Society ČLS JEP. Also available from
 <http://www.cls.cz/seznam-doporucenych-postupu>. {{ #if: 978-80-7262-438-6 } } |article = *Incomplete
 article citation*. Czech Gastroenterological Society ČLS JEP. Colorectal cancer - diagnosis and treatment. also
 available from <http://www.cls.cz/seznam-doporucenych-postupu>. |web = Czech Gastroenterological
 Society ČLS JEP. *Colorectal cancer - diagnosis and treatment* [online]. [cit. 2015-11-13].
 <http://www.cls.cz/seznam-doporucenych-postupu>. |cd = Czech Gastroenterological Society ČLS
 JEP. *Colorectal cancer - diagnosis and treatment* [CD/DVD]. [cit. 2015-11-13]. |db = *Incomplete database
 citation*. *Colorectal cancer - diagnosis and treatment* [database]. [cit. 2015-11-13].
 <http://www.cls.cz/seznam-doporucenych-postupu>. |corporate_literature = *Incomplete citation of company
 literature*. Czech Gastroenterological Society ČLS JEP. Also available from <http://www.cls.cz/seznam-
 doporucenych-postupu>. legislative_document = *Incomplete citation of legislative document*. Also available
 from URL <http://www.cls.cz/seznam-doporucenych-postupu>.

References

- {{#switch: book

|book =

Incomplete publication citation. . *Special Pathology*. Prague : Galen, 2007. 430 s. pp. 167-169. 978-80-7262-438-6.

|collection =

Incomplete citation of contribution in proceedings. . *Special Pathology*. Prague : Galen, 2007. 430 s. pp. 167-169. {{
 #if: 978-807262-494-2 |978-80-7262-438-6 } }
 |article =
Incomplete article citation. . 2007, year 2007, pp. 167-169,

|web =

Incomplete site citation. . Galen, ©2007.

|cd =

Incomplete carrier citation. . Galen, ©2007.

|db =

Incomplete database citation. Galen, ©2007.

|corporate_literature =

. *Special Pathology*. Prague : Galen, 2007. 430 s. 978-80-7262-438-6 } , s. 167-169.