

# Colon - HE

## Modul B

[Expand]

### Colon, HE 40x



#### Simple columnar epithelium:

**EC** - columnar epithelium  
**J** - cell nucleus

#### Other examples:

Digestive system (4,11,17) uterus (33)

Navigation: Epithelial tissue

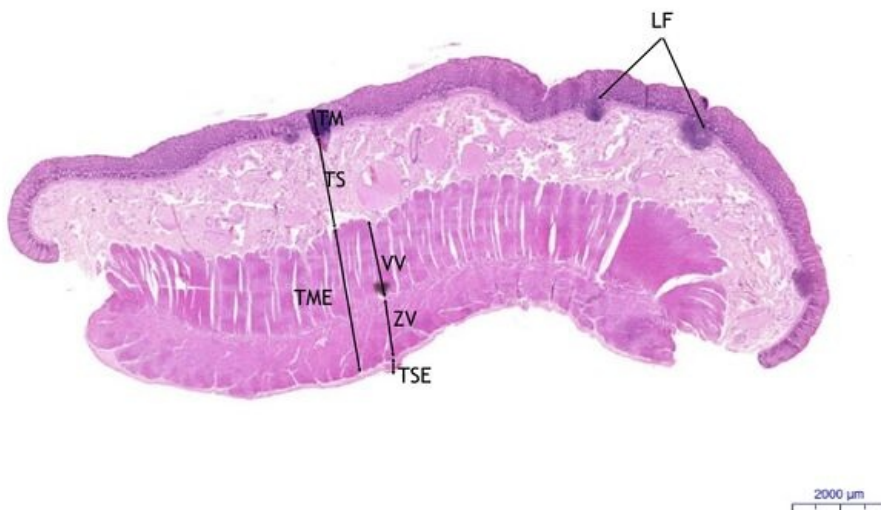
## Modul A

[Expand]

### Colon, HE 0,5x

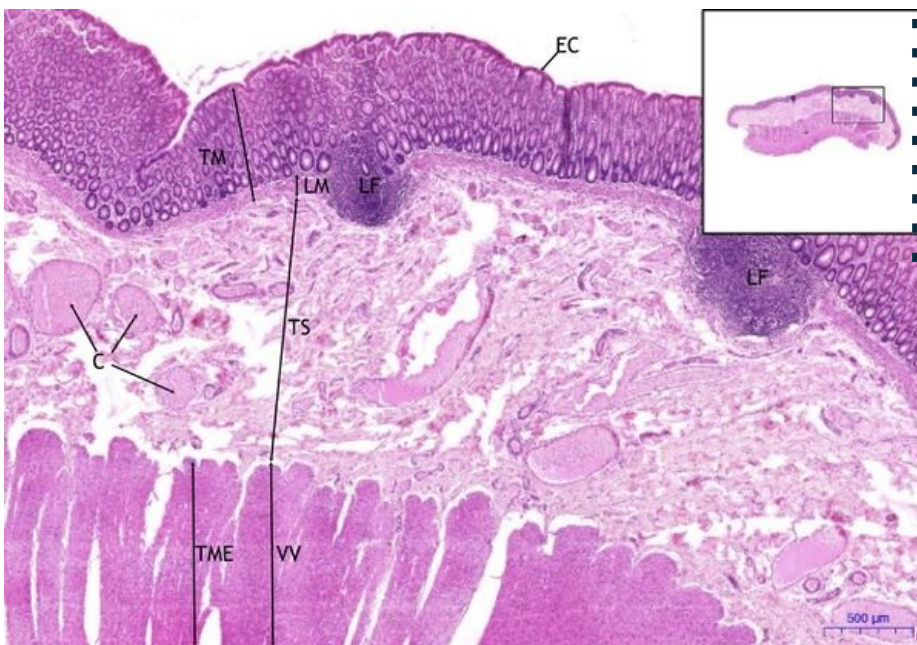
#### Colon:

- **1 ) TM** - tunica mucosa
- **a) LF** - lymph folliculi
- **2) TS** - tunica submucosa
- **3) TME** - tunica muscularis externa
- **a) VV** - inner circular layer
- **b) ZV** - outer longitudinal layer
- **4) TSE** - tunica serosa



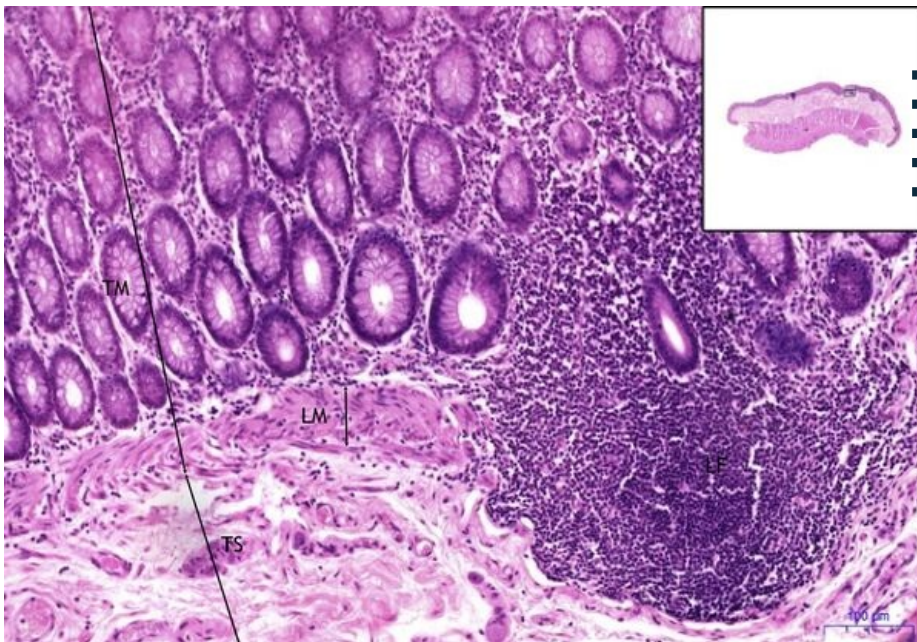
### Colon, HE 2x

Colon:



- 1 ) TM - tunica mucosa
- a) EC - simple columnar epithelium
- b) LM - lamina muscularis mucosae
- c) LM - lamina muscularis mucosae
- d) LF - lymph foliculi
- 2) TS - tunica submucosa
- 3) TME - tunica muscularis externa
- a) VV - inner circular layer
- 4) C - blood vessels

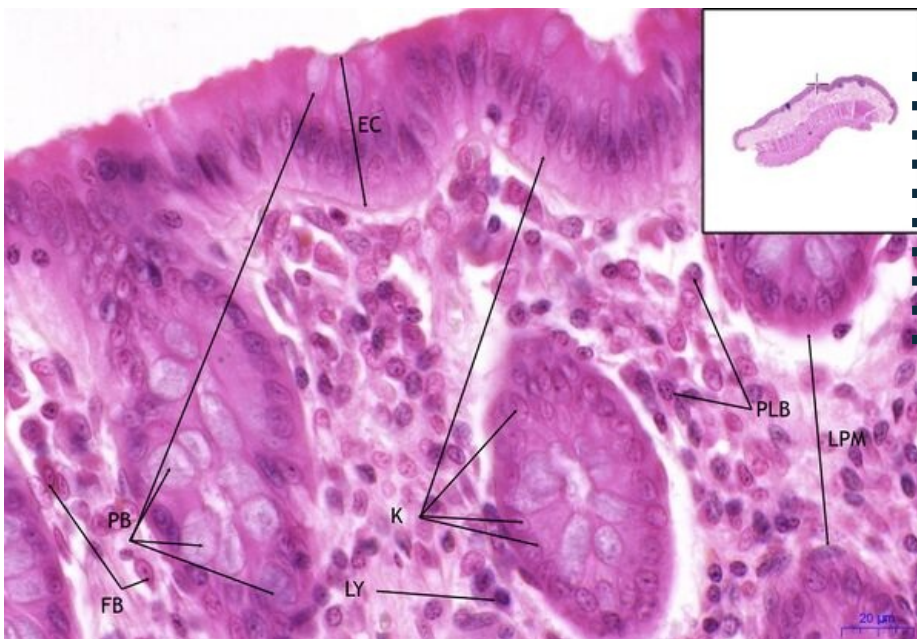
## Colon, HE 10x



### Colon:

- 1 ) TM - tunica mucosa
- a) LM - lamina muscularis mucosae
- b) LM - lamina muscularis mucosae
- c) LF - lymph foliculi
- 2) TS - tunica submucosa

## Colon, HE 40x



### Colon:

- 1 ) TM - tunica mucosa
- a) EC - simple columnar epithelium
- b) LM - lamina muscularis mucosae
- c) LPM - lamina propria mucosae
- d) LF - lymph foliculi
- e) K - colonocyte
- f) PB - goblet cell
- g) LY - lymphocyte
- h) PLB - plasma cell
- i) FB - fibroblast

