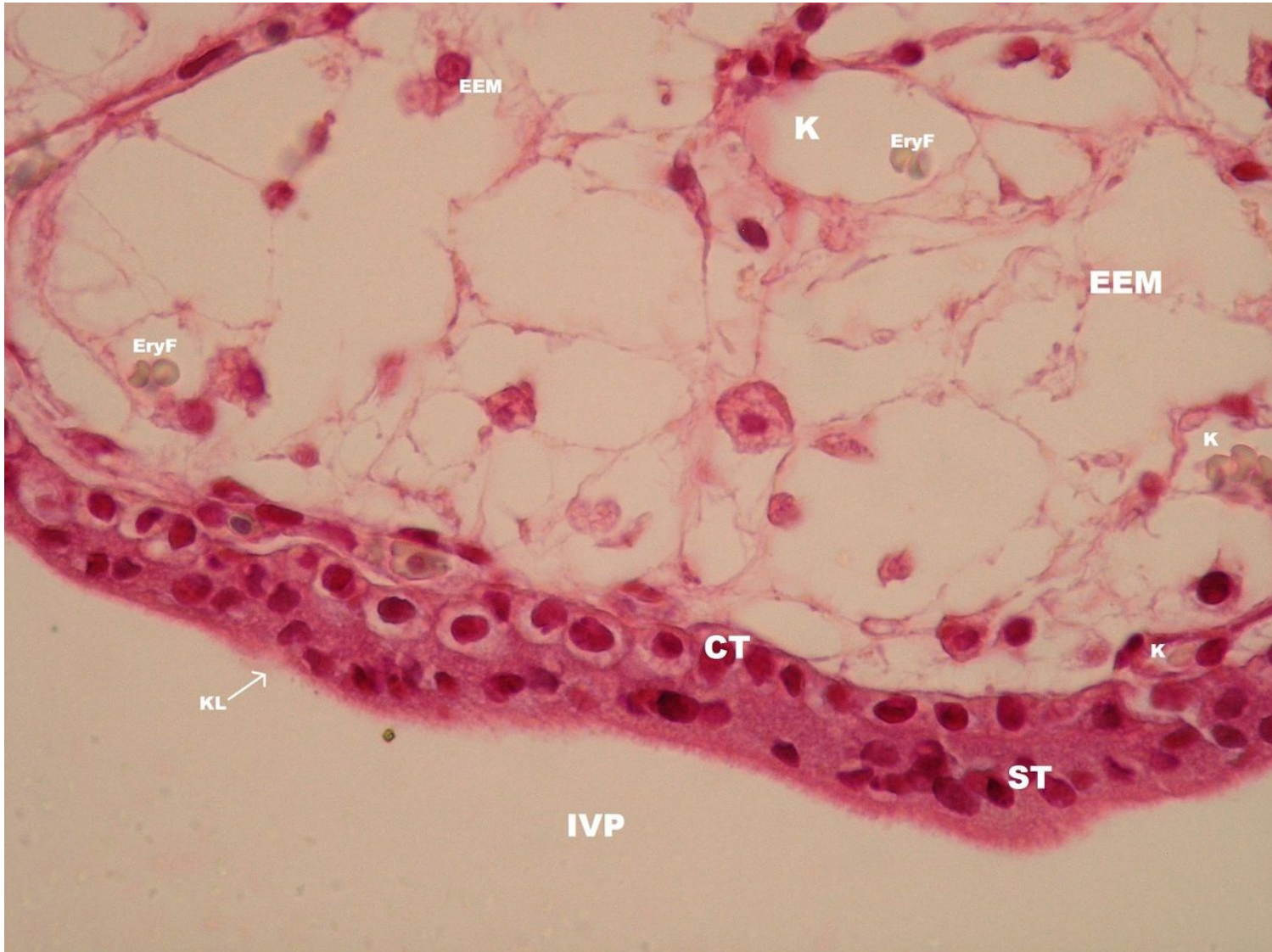


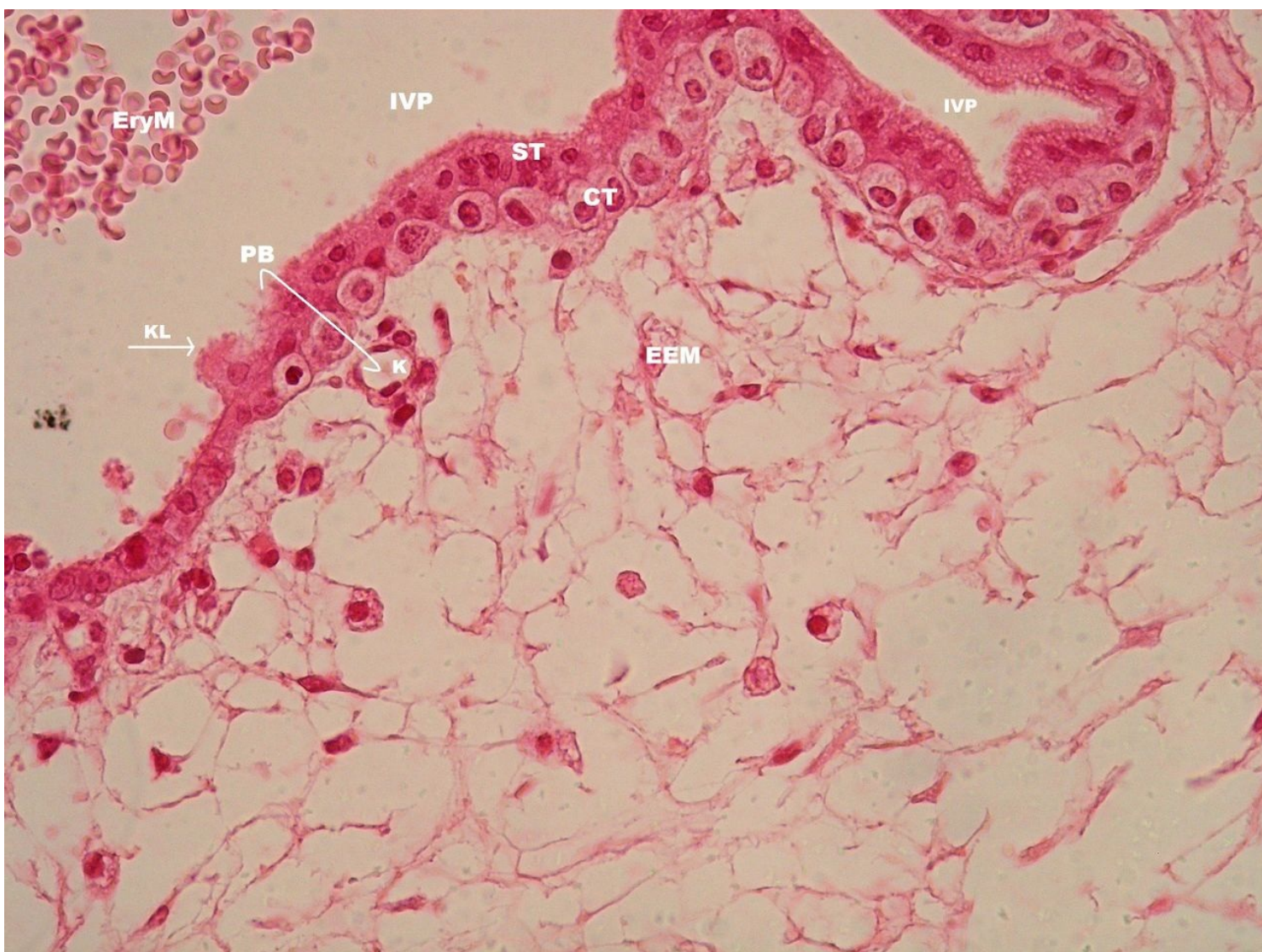
## Chorion frondosum (SFLT)

### Chorion frondosum - villus detail (HE staining)



**Description:** CT – cytotrophoblast, ST – syncytiotrophoblast, KL – brush border of syncytiotrophoblast, EEM – extraembryonic mesoderm, K – capillary with fetal blood erythrocytes (EryF), IVP – intervillous space

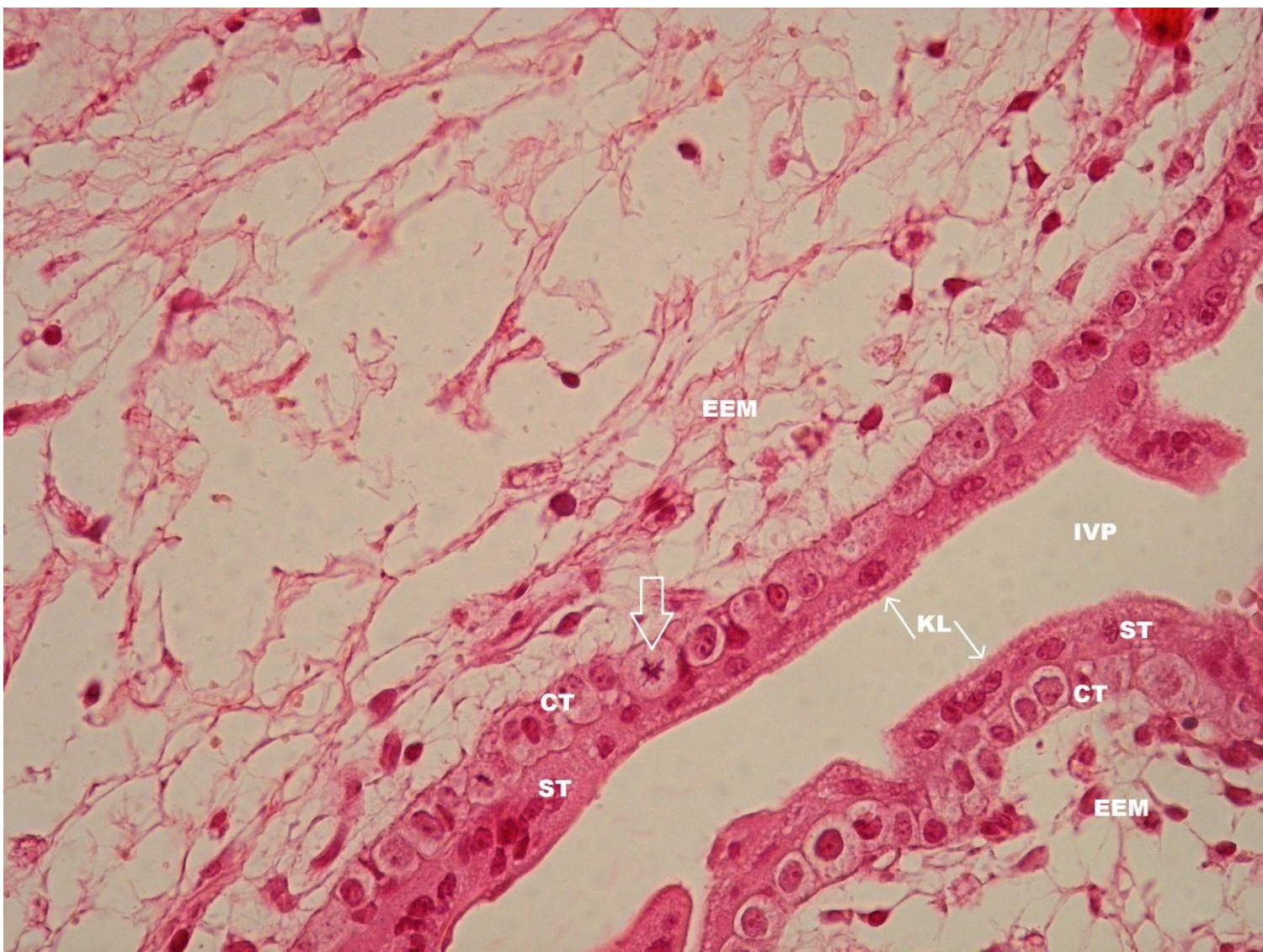
### Chorion frondosum - placental barrier (HE staining)



**Description:** CT - cytotrophoblast, ST - syncytiotrophoblast, KL - brush border of syncytiotrophoblast, EEM - extraembryonic mesoderm, K - capillary, IVP - intervillous space with maternal blood erythrocytes (EryM), PB - placental barrier (shown as loop) includes: capillary endothelium (K), capillary endothelium basement membranes, EEM - extraembryonic mesoderm, cytotrophoblast basement membrane, CT - cytotrophoblast, ST - syncytiotrophoblast, KL - syncytiotrophoblast brush border

**Chorion frondosum - cytotrophoblast and syncytiotrophoblast (HE staining)**





**Description:** CT - cytotrophoblast, ST - syncytiotrophoblast, KL - brush border of syncytiotrophoblast, EEM - extraembryonic mesoderm, IVP - intervillous space, thick arrow - mitosis in cytotrophoblast

## Foetal membranes

- Umbilical Cord (SFLT)
- Foetal membranes (SFLT)
- Placenta (SFLT)
- Chorion frondosum (SFLT)

## Links

- Histological atlas (3. LF UK)