

Category:Pathology

Pages in category "Pathology"

The following 200 pages are in this category, out of 757 total.

(previous page) (next page)

A

- Abdominal Pain
- Abrasion (Dentistry)
- Abscess
- Acanthosis
- Actinomyces israeli
- Actinomycosis
- Acute autoimmune thrombocytopenic purpura
- Acute bronchitis
- Acute inflammation
- Acute myeloid leukemia
- Acute pancreatic necrosis
- Acute pancreatitis (diagnostic tests)
- Acute pharyngitis
- Acute phase reactants
- Acute respiratory distress syndrome
- Adaptation of tissues and organs
- Addison's disease
- Adnexitis
- Adrenal glands
- Agents of cardiovascular infections
- Akantosis
- Albers-Schönberg Disease
- Albinism
- Allergic contact dermatitis
- Allergic professional diseases of the airways and lungs
- Allergy
- Alport's syndrome
- Ameloblastic fibroma
- Anaemia
- Anaphylaxis
- Anemia of chronic diseases
- Aneurysm
- Angina pectoris
- Anitschkow (Anichkov) cells
- Ankylosing spondylarthritis
- Aortic stenosis
- Apoptosis
- Apoptosis signaling disorders in tumor cells
- Arachnoid cysts
- Arrhythmogenic cardiomyopathy
- Arteriosclerosis
- Arthrogryposis multiplex congenita
- Asbestos
- Asbestos-related diseases
- Asbestosis
- Aschoff cells
- Ascites
- Asphyxia
- Asthma
- Atelectasis
- Atopic eczema
- Atrial Fibrillation
- Atrial septal defect
- Atrophy - pathology
- Attrition
- Atypical pneumonia
- Autoimmune diseases
- Autoimmune pancreatitis
- Avascular bone necrosis
- Azotemia

B

- Bacteremia
- Bacterial Endocarditis (histological slide)
- Bacterial meningitis (infection)
- Bacterial meningitis (paediatrics)
- Bajliom
- Bannayan-Riley-Ruvalcaba syndrome
- Barrett's Esophagus
- Bartter syndrome
- Basal cell carcinoma/PGS
- Basalioma
- Bence-Jones protein
- Benign
- Benign kidney tumors
- Benign prostatic hyperplasia
- Benign salivary gland tumors
- Biliary tract
- Biological properties of tumors
- Biology of tumor growth
- Biopsy
- Bladder Cancer
- Bladder carcinoma
- Bleeding
- Botulism (C. Botulinum)
- Bowel malrotation and volvulus
- Bowen's disease
- Brain abscess
- Brain contusions and lacerations
- Talk:Brain edema
- Brain edema
- Brain herniation
- BRCA
- Breast cancer in a man
- Breast tumours
- Brenner tumor
- Bronchiectasis (1.LF)
- Bronchiolitis
- Bruton's agammaglobulinemia
- Budd - Chiari syndrome
- Budd-Chiari Syndrome
- Burkitt lymphoma

C

- Calcification of the dental pulp
- Calculi
- Cancer of the bladder
- Candidosis
- Carbuncle
- Carcinogenicity of Substances and Factors in the Environment
- Carcinogens
- Carcinoma
- Cardiac sarcoidosis
- Cardiogenic shock (CS)
- Cardiomegaly
- Cardiomyopathies
- Cardiomyopathy (CM)
- Cardiovascular disease in the elderly
- Caudae equinae tumors
- Caudal tumors
- Cell
- Cementoblastoma
- Cementoma
- Cerebral ischemia
- Cervical cancer
- Charcot-Marie-Tooth Syndrome
- Cherry stain
- Cherry-red spot
- Cherubism
- Cholesteatoma
- Chondrosarcoma
- Chronic bronchitis
- Chronic inflammation

- Chronic leukemia (guide)
- Chronic nerve compression syndromes (entrapment), peripheral nerve tumors
- Chronic Pancreatitis
- Chronic subdural hematoma
- Churg-Strauss syndrome
- Circulatory collapse
- Classification of pneumonias (pathology)
- Coal worker's pneumoconiosis
- Cold injury
- Collection of material for histological examination
- Colon polyps
- Colorectal adenoma
- Colorectal cancer
- Colorectal cancer/pathology
- Colorectal cancer/PGS
- Colorectal carcinoma
- Colorectal carcinoma (PGS)
- Community-acquired pneumonia
- Complications of diabetes mellitus
- Complications of gastric and duodenal ulcers
- Concretions
- Concussion
- Congenital adrenal hyperplasia
- Congenital defects of the nervous system
- Congenital deformities of the neck
- Congenital dental defects
- Congenital Heart Defects
- Congenital limb defects
- Congenital thrombophilia
- Congo red
- Cor pulmonale
- Corpuscular hemolytic anemia
- Cowden's syndrome
- Cranial base tumors
- Craniopharyngioma
- Crohn's disease/etiopathogenesis
- Cushing's syndrome
- Cystic fibrosis
- Cystic medial necrosis
- Cystic medionecrosis
- Cysts
- Cytopathology

D

- Death
- Decubitus
- Degenerative diseases of the cervical spine
- Dental caries
- Dermatitis contacta allergica
- Dermatitis herpetiformis
- Dermatophytosis
- Deterministic effects of ionizing radiation
- Developmental defects of the body wall
- Developmental hip dysplasia
- Dialysis-related amyloidosis
- Diamond-Blackfan anemia
- Diastrophic dwarfism
- Dilated cardiomyopathy
- Diphtheria
- Diseases of the salivary glands
- Disorders of apoptosis signaling in tumor cells
- Disorders of the intercellular substance
- Disorders of tooth development
- Dissection of the thoracic aorta
- Distribution of autopsies
- Distributive shock
- Dysmenorrhoea
- Dysplasia
- Dystrophy
- Dysuria

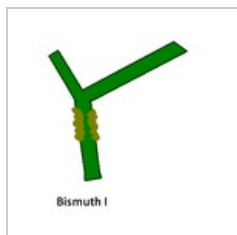
E

- Ectopic pregnancy

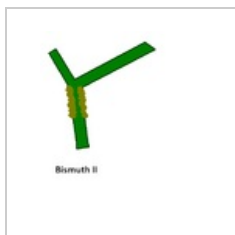
- Edema
 - Effects of ionising radiation
- (previous page) (next page)

Media in category "Pathology"

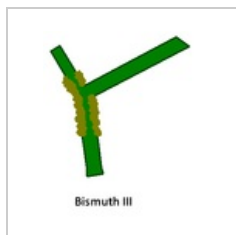
The following 12 files are in this category, out of 12 total.



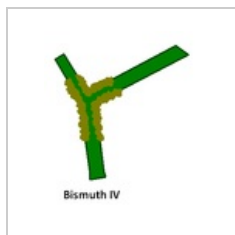
Bismuth I.PNG
320 × 343; 5 KB



Bismuth II.PNG
398 × 446; 7 KB



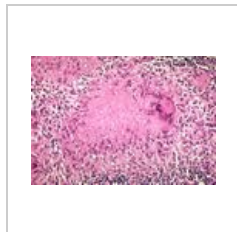
Bismuth III.PNG
296 × 341; 5 KB



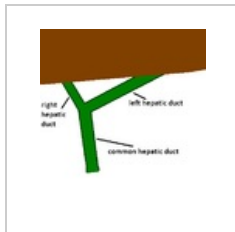
Bismuth IV.PNG
302 × 355; 6 KB



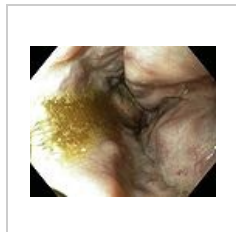
Granulom.jpg
615 × 464; 62 KB



Granuloma necro...
600 × 413; 112 KB



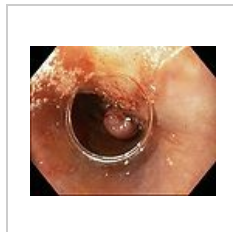
Hepatiky s játry...
398 × 446; 8 KB



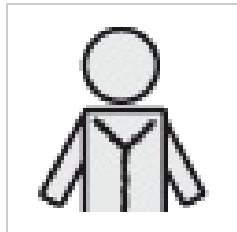
Ligace2.JPG
643 × 527; 39 KB



Ligace3.JPG
645 × 524; 53 KB



Ligace5.JPG
644 × 523; 45 KB



Patologie.png
50 × 50; 4 KB



Žal-varixy.jpg
510 × 400; 170 KB