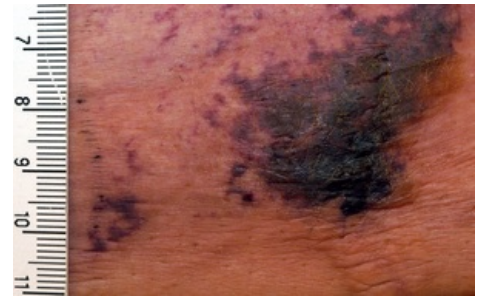


Calcifylaxis

Calcifylaxis is a rare life-threatening syndrome that leads to calcium deposits in the media of small and medium-sized arteries. As a result, ischemia and the appearance of painful skin lesions. Calcifylaxis most often occurs in patients dialysed for chronic renal failure (eremic calcifylax), but also in patients with slightly reduced or normal renal function.

Etiology and risk factors

The pathogenesis of the process remains unclear. Probably, in conditions of uremia and inflammation, there is a violation of calcium-phosphate metabolism, for example, a decrease in extraskeletal calcification inhibitors (MGP, Fetuin-A). Although risk factors include such common conditions as chronic renal failure with hyperphosphatemia, secondary and tertiary hyperparathyroidism, increased vitamin D intake, the prevalence of calcifylax remains low (1-4% of patients with chronic renal failure).



Calcifylaxis on the abdomen of a patient with chronic renal failure

Clinical picture

On the skin of the legs, acres, in the abdomen and hips there are painful lesions of the character **livedo reticularis**. In later stages, exulcerations and necrosis occur. Calcification of blood vessels arises not only in the skin, but also in other organs, for example, calcifications in lung tissue are a common finding.

Differential diagnosis

- Vaskulitis
- Pyoderma gangrenosum
- Leg ulcer
- Embolism of atheroma masses



Livedo reticularis

Therapy

Conservative treatment

Quality analgesia, wound care and sepsis treatment are essential. Withdrawal of vitamin D therapy, efforts to reduce calcium and phosphorus levels. Treatment of hypercoagulant condition requires discontinuation of warfarin and transition to LMWH. Antibiotic treatment in exulcerations and inflammations. Effective is intravenous treatment with sodium thiosulfate.

Surgical treatment

In advanced cases, surgical treatment of exulcerating morings is performed. Parathyroidectomy may be beneficial in patients with secondary or tertiary **hyperparathyroidism**.

Dietary measures

Trying to supply enough nutrients. Emphasis is placed on limiting phosphorous in the diet.

Forecast

Due to **superinfections** of skin lesions, there is a high risk of transition to sepsis with a total mortality rate of around 80%.

Links

Related articles

- Hemodialysis

- Kidney transplantation

External links

Calciphylaxis on Medscape (přístupné po přihlášení) (<https://emedicine.medscape.com/article/1095481-overview#a4>)

Source

STEDDON, Simon – CHESSER, Alistair – CUNNINGHAM, John. *Oxford Handbook of Nephrology and Hypertension*. - edition. OUP Oxford, 2014. 944 pp. ISBN 9780191502972.

NIGWEKAR, Sagar U. – KROSHINSKY, Daniela – NAZARIAN, Rosalynn M.. Calciphylaxis: Risk Factors, Diagnosis, and Treatment. *American Journal of Kidney Diseases*. 2015, y. 1, vol. 66, p. 133-146, ISSN 0272-6386. DOI: 10.1053/j.ajkd.2015.01.034 (<http://dx.doi.org/10.1053%2Fj.ajkd.2015.01.034>).