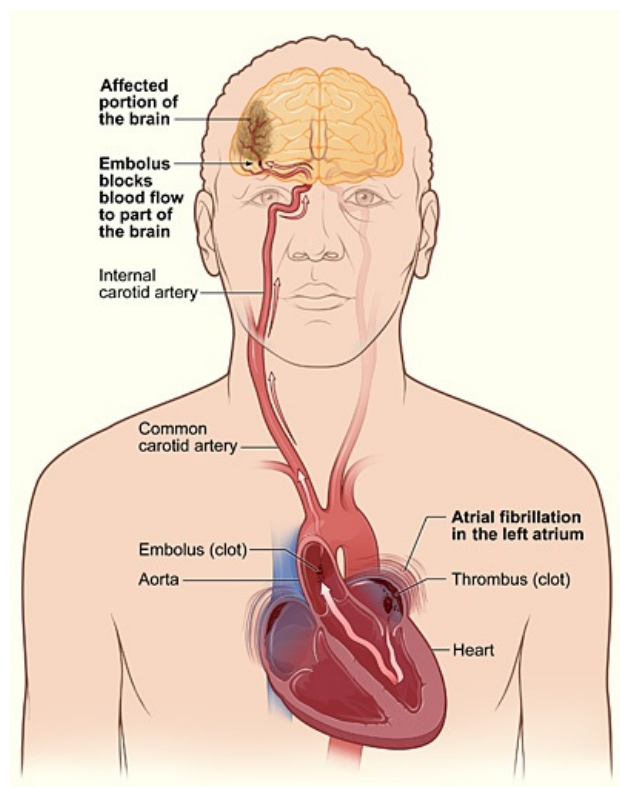


# CHA<sub>2</sub>DS<sub>2</sub>-VASc score

**CHA<sub>2</sub>DS<sub>2</sub>-VASc** score is a scale used to **assess the risk of thromboembolic complications** for patients suffering **atrial fibrillation**. It replaced the older version of the **CHADS<sub>2</sub>** score, which underestimated some indications of anticoagulants compared to this version. In the secondary prevention of ischemic CMP the patient automatically has at least 2 points (risk of recurrence > 10 % / year) and he is indicated for anticoagulant therapy.

<b>C</b>	cardiac failure (EF < 40%)	1
<b>H</b>	hypertension	1
<b>A<sub>2</sub></b>	age ≥ 75	2
<b>D</b>	diabetes mellitus	1
<b>S<sub>2</sub></b>	TIA/iCMP (stroke)	2
<b>V</b>	vascular diseases (IM/ICHs, ICHDK, AS carotid, aorta)	1
<b>A</b>	age 65-74	1
<b>Sc</b>	female sex (sex category)	1

- Maximum number obtained is **9**, when the **risk of thromboembolism** is the highest.
- Patients having **score ≥ 2** are indicated for anticoagulant therapy.
- Patients having **score 1** have highly recommended anticoagulant therapy.
- Patients **without risk factors** do not require treatment or are given antiplatelet agents (ASA).



## Links

### Related articles

- Atrial fibrillation
- Embolization
- Antikoagulants

### Sources

- CHA<sub>2</sub>DS<sub>2</sub>-VASc score (CMP manual) (<http://www.cmp-manual.cz/914-CHADS2-score.html>)
- New anticoagulants in prevention of TE complications FS (<http://www.practicus.eu>)

### External links

- Chadsvasc.org (<https://www.chadsvasc.org/>)

