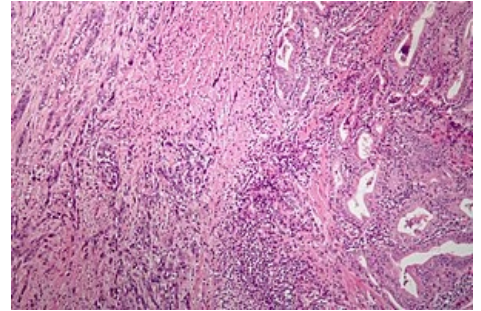


# Anaplastic thyroid carcinoma

Anaplastic thyroid carcinoma i. e. anaplastic thyroid cancer is a rare (1–5 % of thyroid carcinoma). It usually affect individuals older than 60–70 years. Characteristic features for this type of tumor is: rapid growth of cancerous nodules, invasion to surroundings and mechanical syndrome (due to pressure). It creates distant metastasis (lymph nodes, lungs, liver, CNS).



Anaplastic thyroid carcinoma

## Therapy

- Radical chirurgical intervention (total thyroidectomy),
- paliative care – cytostatic drugs + external radiation;
- often the therapy is only supportive.

## Prognosis

- Unfavorable, the median survival is 5 months.

## Links

### Related articles

- Nádory štítné žlázy
- Diferencovaný karcinom štítné žlázy
- Medulární karcinom štítné žlázy

## Literature

- DÍTĚ, P., et al. *Vnitřní lékařství*. 2. vydání. Praha : Galén, 2007. ISBN 978-80-7262-496-6.
- BENEŠ, Jiří. *Studijní materiály* [online]. ©2007. [cit. 2014]. <<http://jirben.wz.cz>>
- 
- 

## References

1. KEUTGEN, Xavier M, Samira M SADOWSKI a Electron KEBEBEW. Management of anaplastic thyroid cancer. *Gland Surg* [online]. 2015, vol. 4, no. 1, s. 44-51, dostupné také z <<https://www.ncbi.nlm.nih.gov/pmc/articles/PMC4321056/?tool=pubmed>>. ISSN 2227-684X.