

Anaplastic thyroid cancer

Anaplastic thyroid cancer is rare (1-5% of thyroid cancers). It usually affects people over 60-70 years of age. This type of tumor is characterized by rapid growth of the tumor node, invasion of the environment and mechanical syndrome (from oppression). It creates early distant metastases (nodes , lungs , liver , CNS).

Therapy

- Radical surgery (total thyroidectomy),
- palliation - cytostatics + external irradiation .
- often only symptomatic treatment .

Prognosis

- Unfavorable, median survival 5 months.

Links

Related articles

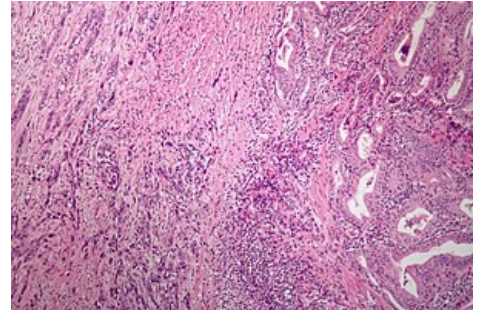
- Thyroid tumors
- Differentiated thyroid cancer
- Medullary thyroid carcinoma

References

- CHILD, P., et al. *Internal Medicine*. 2nd edition. Prague: Galén, 2007. ISBN 978-80-7262-496-6
- BENEŠ, Jiří. *Study materials* [online]. © 2007. [feeling. 2014]. < <http://jirben.wz.cz> >.
-

Reference

1. KEUTGEN, Xavier M, Samira M SADOWSKI and Electron KEBEBEW. Management of anaplastic thyroid cancer. *Gland Surg* [online] . 2015, vol. 4, no. 1, pp. 44-51, also available from < <https://www.ncbi.nlm.nih.gov/pmc/articles/PMC4321056/?tool=pubmed> >. ISSN 2227-684X.



Anaplastic carcinoma of the gastrointestinal tract